

State Route 82 (El Camino Real)

Community Meeting

Mountain View, Los Altos, and Palo Alto

November 14, 2023



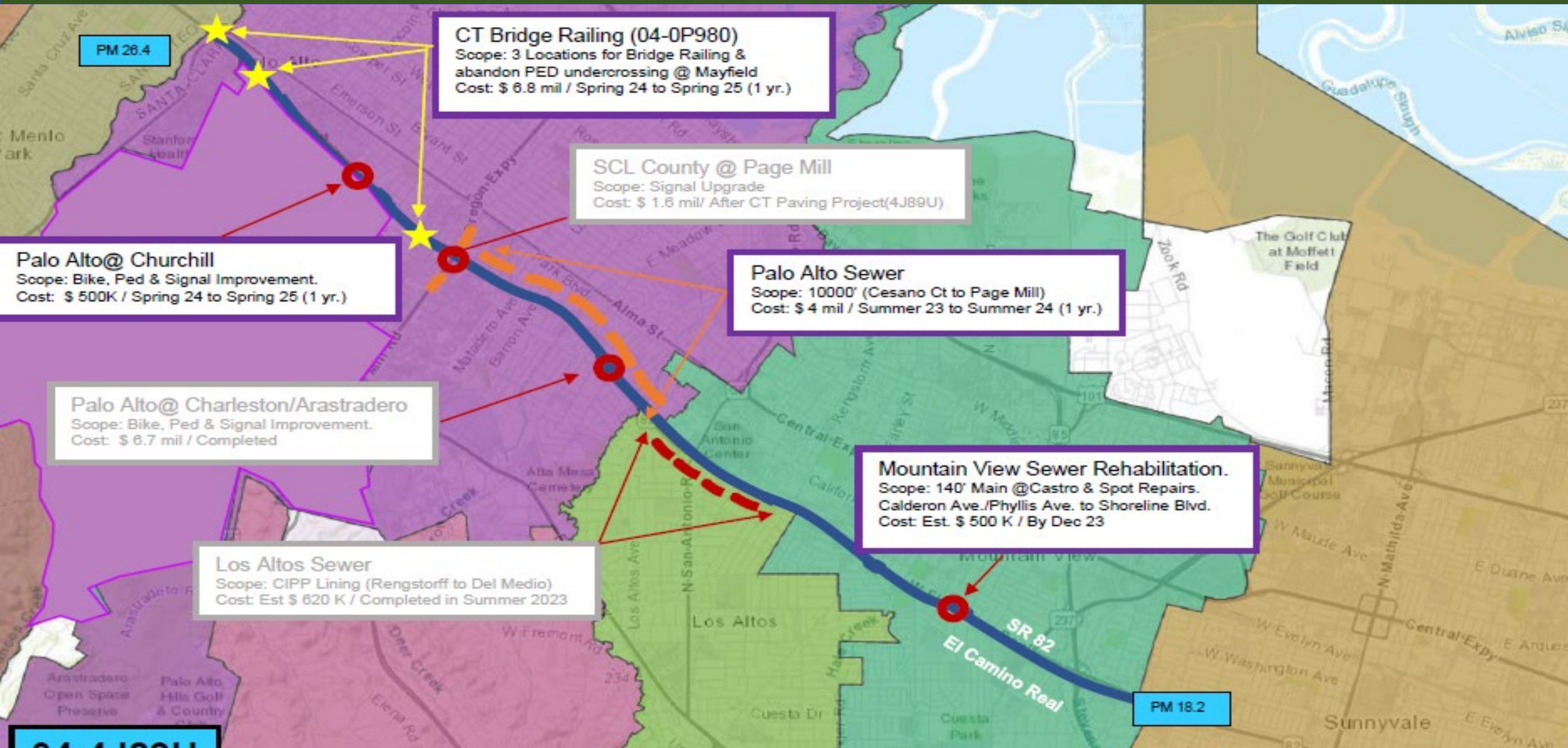


AGENDA

- 1. Introduction**
- 2. Investment along the Corridor**
- 3. Caltrans projects on SR 82 (El Camino Real)**
- 4. Maintenance**
- 5. Contact**
- 6. Q & A**

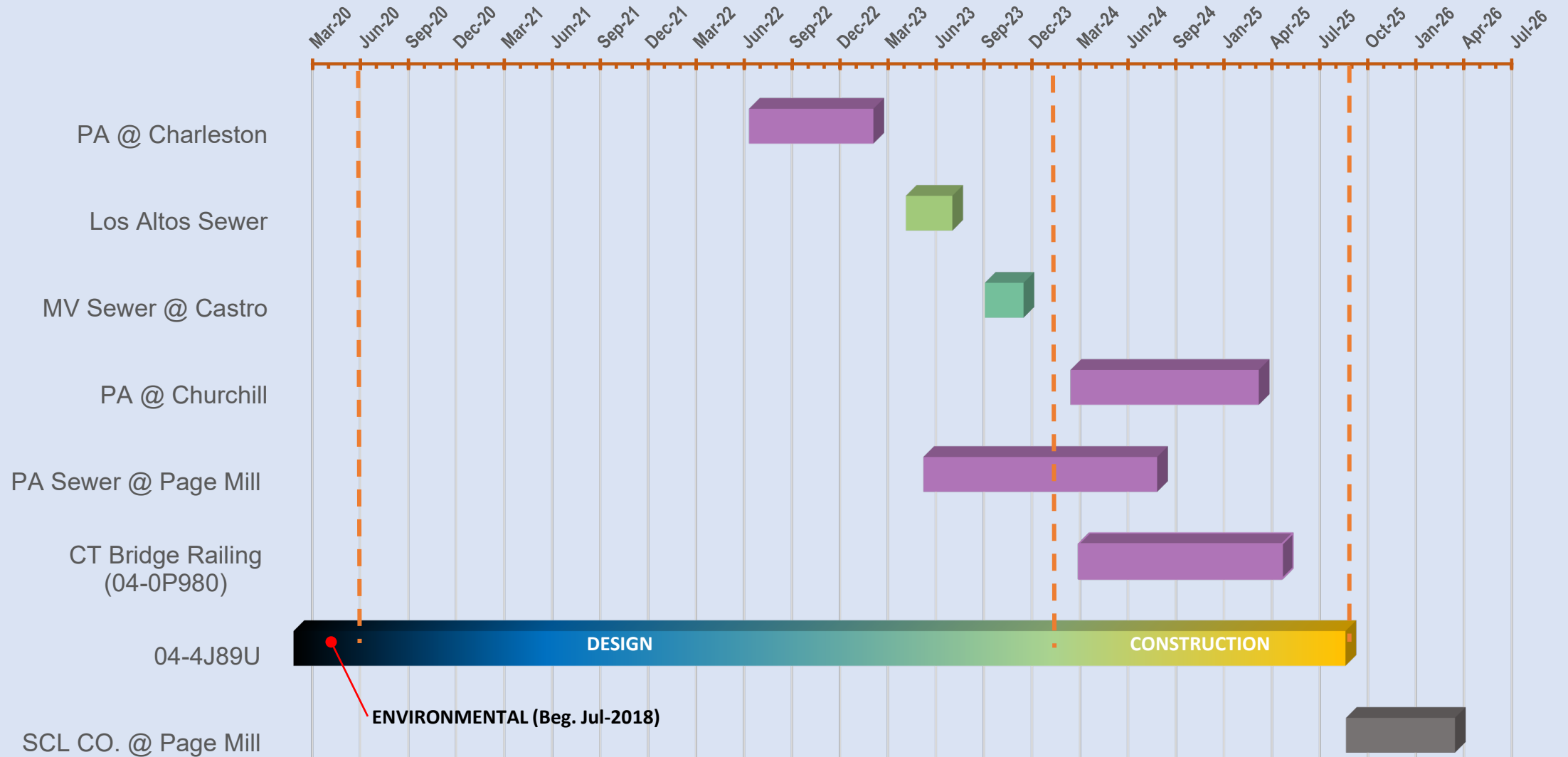


INVESTMENT ALONG THE CORRIDOR





INVESTMENT ALONG THE CORRIDOR





CALTRANS PROJECTS ON SR 82 (ECR)

CURRENT PROJECT

- Pavement Rehabilitation and ADA Improvements

UPCOMING PROJECTS

- Upgrade bridge rail and Abandon pedestrian undercrossing
- ADA Improvements



PAVEMENT REHABILITATION AND ADA IMPROVEMENTS

LOCATION:

From 0.7 mile south of SR 237 to Sand Hill Rd. on SR 82 (PM 18.2/26.4)

DURATION:

300 working days

TOTAL PROJECT COST : \$44.6 M

SHOPP: \$40.9 M (SB 1:\$4.47 M)

LOCAL: \$3.7 M





PAVEMENT REHABILITATION AND ADA IMPROVEMENTS

PURPOSE: To preserve and extend the life of existing pavement and improve ride quality and to upgrade existing pedestrian facilities to comply with current ADA Standards and to improve safety, access and mobility for pedestrians at signalized intersections on the State Highway System.

NEED: To improve ride quality, to comply with current ADA standard, and to improve safety, access, and mobility of pedestrians and bikes.



PAVEMENT REHABILITATION AND ADA IMPROVEMENTS

SCOPE:

- Cold plane and overlay Asphalt Concrete (AC) pavement with Rubberized AC(0.2 feet)
- Repair localized failed Concrete pavement.
- Upgrade the existing curb ramps (total 100) and sidewalks(about 5,000 feet) to ADA standard
- Upgrade to APS (Accessible Pedestrian Signal) and higher visibility crosswalk markings
- Install 3 New Pedestrian Hybrid Beacon systems at Bonita Ave, Crestview Dr, and Pettis Ave
- Install new bike lanes
- Upgrade pavement, pedestrian, and bicycle crossing delineation



Ped Hybrid Beacon System



High visibility X-walk

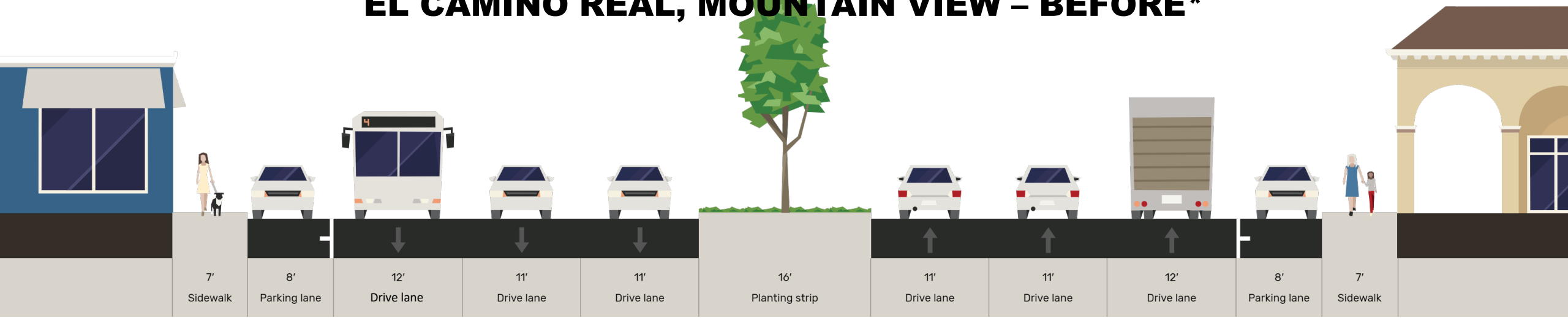


APS

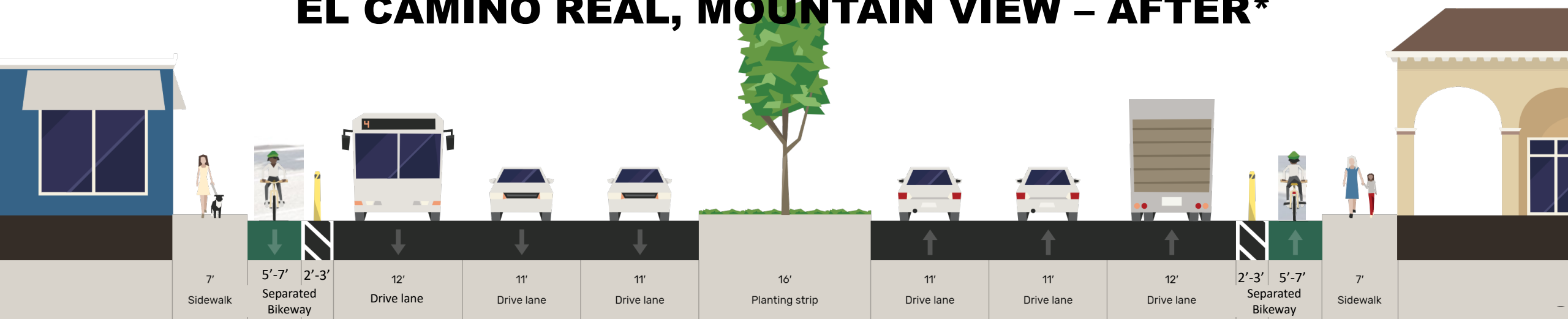


PAVEMENT REHABILITATION AND ADA IMPROVEMENTS – TYPICAL CROSS SECTION

EL CAMINO REAL, MOUNTAIN VIEW – BEFORE*



EL CAMINO REAL, MOUNTAIN VIEW – AFTER*



*Widths vary through corridor



PAVEMENT REHABILITATION AND ADA IMPROVEMENTS – CONSTRUCTION INFORMATION

SCHEDULE: From fall 2023 to fall 2025(T)

- A. November 2023: Pavement repairs for 2-3 days
- B. January 2024: Sidewalk/curb ramp/electrical work starts
- C. Late Spring 2024: Permanent pavement work starts

LANE CLOSURES:

- Northbound SR 82 from 9:00 PM to 7:00 AM
- Southbound SR 82 from 10:00 PM to 8:00 AM
- Day and night work are expected
- Parking will be restricted when in conflict with planned work

CONSTRUCTION COST: \$30.9 M

CONTRACTOR: O.C. JONES & SONS, Inc.



CALTRANS UPCOMING PROJECTS

UPGRADE BRIDGE RAIL AND ABANDON PEDESTRIAN UNDERCROSSING

LOCATION: SR 82 (ECR) Postmile 11.38/26.36

-3 locations in Palo Alto

1. Mayfield Undercrossing
2. University Ave Overcrossing
3. San Francisquito Creek Overcrossing

SCHEDULE:

- Begin construction – spring 2024(T)
- End construction- spring 2025(T)

DURATION: 225 working days

CONSTRUCTION COST: \$6.8M





CALTRANS UPCOMING PROJECTS

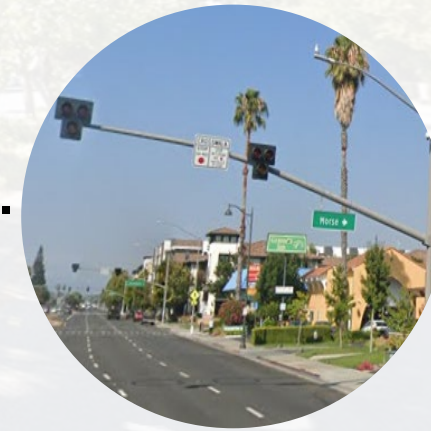
UPGRADE BRIDGE RAIL AND ABANDON PEDESTRIAN UNDERCROSSING

PURPOSE: upgrade existing vehicular and pedestrian bridge railings to standard and close an underutilized non-ADA compliant pedestrian tunnel.

NEED: safety mandate per federal standards to upgrade bridge rail.

SCOPE:

- Upgrade bridge rail
- Widen sidewalk on both sides to standard on the bridges
- Close the Mayfield Pedestrian Undercrossing at Grant Ave.
- Install a Pedestrian Hybrid Beacon system at Grant Ave.
- Install high-visibility crosswalk striping
- Install new and upgrade ADA curbs



Ped Hybrid Beacon System



University Avenue OC Proposed Architectural treatment



CALTRANS UPCOMING PROJECTS ADA IMPROVEMENTS

LOCATION: SR 82(ECR) Postmile9.78/26.34

-Various locations in Santa Clara County

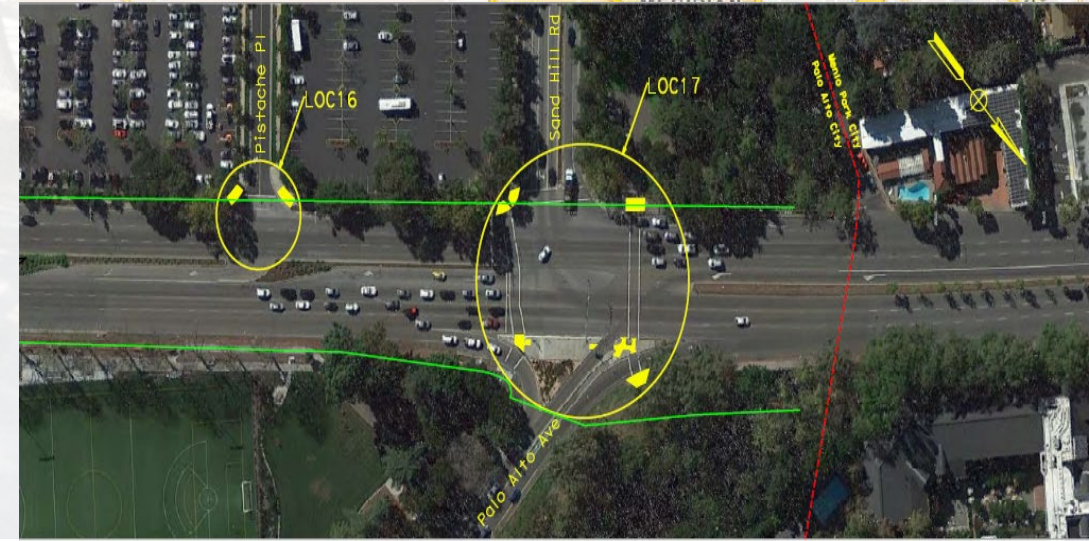
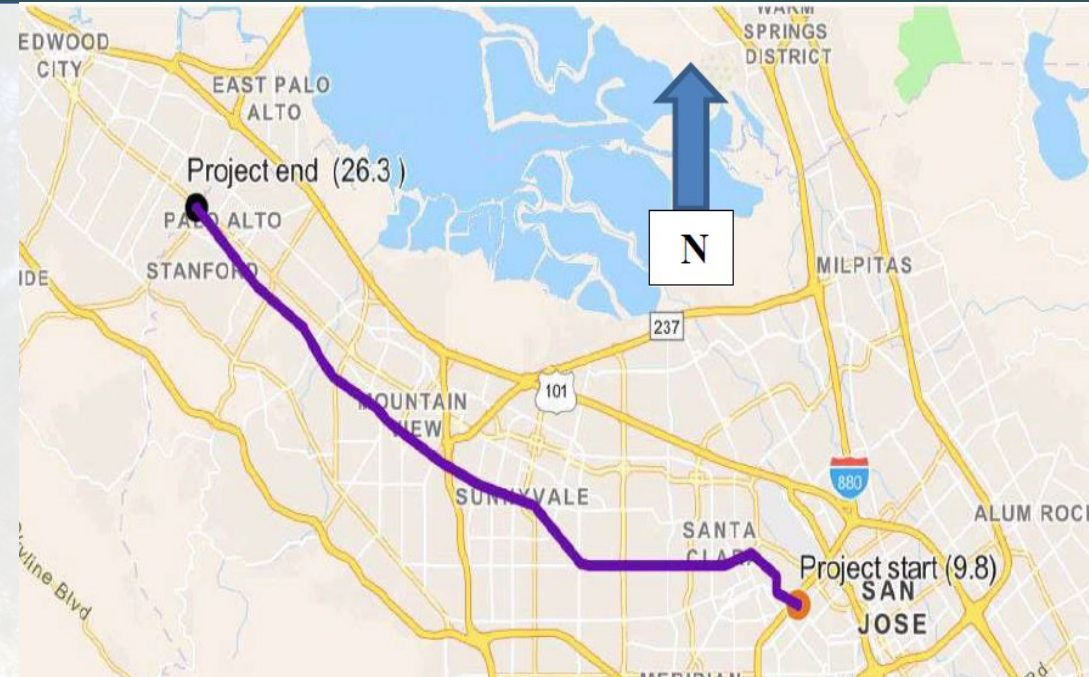
-2 locations in Palo Alto

1. Pistache Pl
2. Sand Hill Rd

SCHEDULE:

- Complete environmental document-summer 2026(T)
- Complete design-spring 2028(T)
- Begin construction- fall 2028(T)
- End construction- summer 2029(T)

CONSTRUCTION COST: \$3.9M





MAINTENANCE

FIELD MAINTENANCE CREW PERFORMS:

- Regular weekly inspection
- Inspections before, during, and after rain events
- Sweeping and repairing potholes as needed
- Maintaining a Pump station

REPAIRED POTHOLES ON SR 82 IN APRIL 2023 (3,600 tons of Asphalt Concrete)





CONTACT

For Caltrans project question:
Victor Gauthier, Caltrans Public Information Officer
Victor.Gauthier@dot.ca.gov

Caltrans pavement rehabilitation project information website
<https://dot.ca.gov/caltrans-near-me/district-4/d4-projects/d4-santa-clara-sr82-pavement-rehabilitation-and-ada-improvements>

Caltrans customer service request website
<https://csr.dot.ca.gov>

State Route 82 (El Camino Real)

Community Meeting

Mountain View, Los Altos, and Palo Alto

Q & A



November 14, 2023